

The Painswick Beacon

Volume 48 Number 2

May 2025

Procession of Witness

A good number of the community took part in the Good Friday procession of witness arranged by Churches Together in Painswick in more clement weather than last year. Many of the participants then swelled the ranks of the Friday Hub in the Town Hall for a hot cross bun and tea and coffee.



New Speed Cameras

Along with the signs for the new lower speed limit of 40mph from Stroud through to Painswick average speed cameras have also been installed along the route.



The speed limit has been brought in for safety reasons; please be mindful both of your speed and the cameras.

Drive safely!

VE Day, 80 years on Exhibition not to be missed

VE Day, Victory in Europe Day, was one of the most significant occasions in world history. After six years of war involving almost every nation on earth it was the day Germany surrendered unconditionally to the Allies bringing peace at last. VE Day indeed continues to be of relevance and therefore of great importance to this day. This year marks the 80th anniversary and as such will be celebrated nationally on 5th May.

The celebrations in May 1945 were universal and Painswick was no exception. Everyone everywhere, regardless of age, had been affected by the six years of war and thus VE Day was of real significance to all. Eighty years later, 2025, of those who were actually involved on the front line the youngest will now be at least 98 years of age. This anniversary is for so many reasons therefore one to be acknowledged far and wide.

Painswick's involvement in the war covered many aspects and to mark this notable anniversary there will be a display in St Mary's Church for a few days from the beginning of May highlighting Painswick's experience of VE Day and the war. There will also be leaflets in the church explaining that on 8th May, actual VE Day, people of all denominations and religions are invited to pray in the church for peace – so apposite and so vital for humanity everywhere.

This is a very important anniversary and one which we should all acknowledge as of relevance both now and in our history and for the future. Do go into the church and see how, in so many ways, Painswick was involved.

Carol Maxwell



**PAINSWICK
VE DAY EVENT**



**JOIN US FOR A VILLAGE
CELEBRATION!**

Honouring the service and sacrifice of our UK armed forces.

Painswick Community Support and Painswick Parish Council invite all ages to honour the brave men, women, and animals of the UK military. Join us for free cake, drinks, and a moment of community and gratitude.

**10AM-12PM | FRIDAY 9TH MAY
PAINSWICK TOWN HALL**

PARISH COUNCIL NEWS - report from the meetings held on Wed 16th April 2025 by David Allot

The Parish Council meeting on Wednesday 16th April had a modest agenda that was expanded by the reports from District and County Councillors.

The Chairman informed us that Painswick was entering all four categories of the G.R.C.C. Village of the Year 2025 competition and that those involved were very busy assembling the requested information for the end of April deadline. At this stage full details were not available, more will be released in time for the June edition of The Beacon.

Under the BT "adopt a phone kiosk scheme" the Council decided to adopt two: New Street Painswick, and by the Woolpack in Slad.

Next Meetings: There will be two in May. The usual monthly one will be on Wednesday 21st May at 7.30 pm in the Town Hall. Before that, and also in the Town Hall but from 6 pm on Wednesday 7th May will be the special Annual Parish Meeting. This is more of a showcase, without any agenda, resolutions or notes. The Council, local organisations, the police and Community Officer (previously known as Neighbourhood Warden) for example will be present with displays and representatives to inform visitors and answer their questions. All are welcome.

District Council Report (Gary Luff)

The full Council had an Extraordinary meeting on 20th March to agree the interim plan, a joint response from ALL the Gloucestershire Councils to the Government about Local Government Reorganisation. Members unanimously agreed with the drafted letter which has now been sent to the Government Minister. There will now be a comparative pause leading to the submission of final proposals by November 28th.

Three options, all without District Councils, are now being considered:

1. A unitary Council for the whole county, population 659,000
2. Two unitary councils. In the west, with population of 349,000, the districts of

Gloucester, Forest of Dean and Stroud. In the east with population of 310,000, the district of Cheltenham, Cotswolds and Tewksbury.

3. A city-based unitary council based on a Greater Gloucester area, along with one or two unitaries for the rest of the county area.

The Community Services and Licensing Committee, on 13th March revised the 2025 Community Wellbeing Grant. They agreed three main changes to improve "delivery in alignment with the Voluntary and Community Sector (VCSE) principles of good partnership working". There are three main changes:

1. Targeting grant to Community Hubs, other (VCSE) partners for well-being work and to Cultural Hubs for Health Inequalities.
2. One or two year terms for new grant agreements.
3. Other funding options including, Small Grants of under £1,000, Stroud Funding (crowd funding platform) and funding relating to other Council or partner workstreams.

Neighbourhood Wardens

There are some changes to the roles of Community Officers as these are now known. To reflect local needs and take in a broader range of work, the six officers for Stroud District will now focus on four areas:

1. Prevention: Area based working, attending community events, youth employment, building community partnerships, community safety, ASB (Anti Social Behaviour) prevention and support, community based projects and sharing information.
2. Reactive: Addressing ASB through evidence gathering on fly tipping, organising team and community clean-up days and engagement with property owners, Town and Parish Councils and community groups, adapting to the community needs based on data and local intelligence, conducting joint patrols with

other agencies and safeguarding.

3. One Council: Acting as council champions, disseminating messages through community involvement, and relaying concerns to relevant council officers. Collaborating closely with all council services on joint ventures such as community safety awareness campaigns, planning notices. Supporting the new Carline model, signposting residents in need of help, promoting the service through regular clinics in Community Hubs, supporting elections in various roles and being part of the emergency support team.

4. Competency Model: Developing a competency model and training plan for existing and new officers, focusing on areas such as community building, ASB prevention, and safeguarding to ensure continuity and professionalism.

Stroud Funding. Round two applications have to be in by 7th May. Those not ready can join next round in June, which will commence in September.

County Council Report (Sue Williams) Election. By the time you read this, the County Councillor elections will have taken place on Thursday 1st.

Speed reduction on the A46 and B4073 The 50 to 40 mph speed changes along the A46 and B4073 are already happening. Some of the new 40mph signs are already in place.

Older Residents: Up to £30,000 grants and New Campaign for Older Residents.

The Living Well in Later Life Campaign increases awareness of available assistance as well as the steps older people (and their families) can take to improve their life's quality and future prospects. For example, The Disabled Facilities Grant can provide up to £30,000 to help people to live independently for longer. Also older residents are encouraged to sign up to Digi Hubs and to use such as The Online Financial Assessment to plan costs of care. The County Council website is where you will find information about all the above, and more.

**painswick
osteopaths**

Paul Stamp D.O. Helen Froggatt D.O.

Tel: 01452 301748

- Structural
- Sports Injury
- Cranial Osteopathy
- Neck, Shoulder, Hip, Knee

Parking Available

**CLARICO
EXTERIOR CLEANING**

WINDOW CLEANING
High reaching water-fed pole system
(suitable for delicate windows)

**SOFFITS, FASCIAS & CLADDING
GLASS VERANDAS
CONSERVATORIES & ALIKE
SOLAR (PV) PANELS**

£5 Million Public Liability Insurance

"We'll always notify you the day before we're due"

T: 07552 398638
claricoexteriorcleaning@gmail.com
www.claricoexteriorcleaning.co.uk

CBS

PAINSWICK BASED

INSURANCE BROKER
PERSONAL & COMMERCIAL COVER

Contact Adrian Gyde on
07770 881 695
www.cotswoldbroking.co.uk

The Annual Parish Drop-in Meeting is to be held in the Town Hall on Wednesday 7th May 2025 between 6.00pm and 7.30pm

Members of the Public are welcome to attend the drop-in meeting. It is your chance to meet with the following invited representatives:

- Parish Council – Traffic, Footpath, Rural Environment, Land and Buildings and Planning Committees.
- Gloucestershire County Council Councillor
- District Councillor
- Community Police
- Neighbourhood Warden
- Community Library
- Painswick Beacon Conservation Group
- Cotswold Wardens
- Painswick Community Support Group
- Play Painswick

Downton House Garden May Opening

Wednesday 28th and Thursday 29th May 2025 10.30am-3.30pm

The garden at Downton House, Painswick (entrance in Hollyhock Lane) is opening on Wednesday 28th and Thursday 29th May for the National Garden Scheme (NGS).

Downton House garden opened in 2024 for Snowdrops and many of you came to see the display. In spite of rather dismal February weather, we raised over £1,600 which went towards the record-breaking £3.5 million which the NGS donated last year to nursing charities including Macmillan Cancer Support, Marie Curie, Parkinson's UK and the Carers Trust. The NGS is the largest private donor to national Nursing charities and, during the week we open in May, it will focus on the Carers Trust which supports unpaid carers.

The NGS does excellent work so please do come and support us in May. There should be lots in the garden to admire, including peonies and early roses.

Julie from Exedra Nursery will be selling plants on both days. Tea and home-made cake will be available in the garden from 2pm. Limited wheelchair access only. Dogs on leads welcome.

Jane Kilpatrick



Graffiti

In the early hours of Thursday 10 April, between 4am and 4.30am, the side wall of the Hamptons Estate Agents office on Vicarage Street was defaced with graffiti. The two male suspects have been captured on CCTV and the footage has been passed on to Gloucestershire Constabulary for them to continue their enquiries. This is a regrettable incident and not what anyone would expect in such a charming and historic community. Anyone with further information or CCTV/doorbell footage is requested to contact either Guy Tabony at Hamptons (01452 812354) or PCSO Nicola Wood via the Neighbourhood Policing Team.

Guy Tabony

HUNTER • PEARCE D E C O R A T I N G

Reliable and Professional Service

Interior and exterior work

Paint and colour advice upon request

CONTACT

07733434773

info@hunterpearce.co.uk

Discover THE FALCON PAINSWICK



COMMUNITY HIRE | ROOMS |
SEASONAL MENUS | ENGLISH WINES

Contact or visit us:

The Falcon, New Street, Painswick, Stroud GL6 6UN
01452 222820 | www.thefalconpainswick.com | @falconpainswick

MANN Jewellers Established 1741

8 GEORGE ST, STROUD

GOLD COINS WANTED

Sovereigns, Krugerrands & Bullion
bought for cash or instant bank transfer

We also buy **jewellery & classic watches**

Visit our Stroud shop

01453 764097

Mention this ad for a free appraisal

We are still an independent family-run business



P.L.ALLARD BUILDING & ROOFING LTD. Specialists in Period & Modern Property

- | | |
|-----------------------|----------------------|
| Cotswold Stone Tiling | Interior Renovation |
| Natural Slate | Bathrooms & Kitchens |
| Woodstoves | Chimney Repairs |
| Guttering & Leadworks | General Building |

T. 01452 814278 M. 07841 695705

www.allardbuilders.com p.allardbuilders@gmail.com

BRIGHT & BEAUTIFUL A BEAUTIFULLY CLEAN HOME AND A BRIGHTER YOU

- | | |
|-------------------------------|-------------------------------------|
| HOLISTIC
HOUSEKEEPING | PURE ECO FRIENDLY
PRODUCTS |
| STRICT SECURITY
PROCEDURES | TRUSTED TEAMS OF
UNIFORMED STAFF |

REGULAR CLEANS HOLIDAY LETTING
CLEANING DEEP CLEANS

01452 401171

gloucester@brightandbeautifulhome.com

Painswick Fairtrade News

Why Fairtrade? Fairtrade is still the only properly certified scheme to safeguard the farmers and farm workers who produce the food and goods we love but only grow in tropical climates.

**CHOOSE THE WORLD
YOU WANT**



What is the problem for farmers? Farmers all over the world including the UK take on all the production risks of growing crops but receive about 5% of the value chain. To compensate farmers and keep food prices low, many governments around the world compensate their farmers in unequal trade relationships by direct subsidies, e.g. USA and Europe. However, the very poorest countries, mostly in the global south are unsupported in this way making farmers even poorer. Buying certified Fairtrade does help. The logo above means the producer co-operative has paid to be part of an independently verified certification scheme. Unlike some claims and logos on products we buy in the shops, this one is not a "greenwash" scheme.

What is Painswick doing? Painswick became a Fairtrade community back in 2010 which means we have lots of businesses and organisations that serve or sell Fairtrade goods such as coffee, sugar, tea and chocolate. So a big Thank You to the many businesses, shops, groups and churches who continue to choose and support Fairtrade in the small, everyday choices you make buying coffee, sugar, tea, chocolate, bananas, cotton and Easter Eggs and many other products with the logo above.



The Painswick Pharmacy stuffed with wonderful Fairtrade goods

If you want to know more please do ring 07774550427 or email iris.mccormick@rau.ac.uk

More on offer than you think at Painswick Pharmacy

As well as what you would expect, we also have a Photo Booth, gifts, a fine selection of teas, eco and vegan friendly body care, and cleaning products.

Our Pharmacist has even created his own coffee blend, exclusively for us.

We have launched the New Medicine Service, as well as offering Pharmacy First, with more to follow. If there are any services or products you would like to see, please do let us know.

Pop in and see us or call to place an order.

Penny, Adis, Millie and Oli.



"Shaken and Uncorked"
Tuesdays
Tuesday is the new Friday at
The Painswick

THE PAINSWICK

50% off selected
Cocktails and Wines
From old favourites to new
seasonal tipples to try.
We'll see you there!

01452 813 688
www.thepainswick.co.uk

**BEACON
BAR & KITCHEN**

BREAKFAST (Wed - Sat)
LUNCH (Wed - Sat)
SUNDAY LUNCH
DINNER (Fri and Sat only)
FULLY LICENSED BAR
COFFEE and CAKE
Available to book for
WEDDINGS PARTIES WAKES
& GENERAL GATHERINGS

01452 812180
beacon-bar-kitchen@outlook.com
Painswick Golf Club, Golf Course Road,
Painswick, Stroud GL6 6TL

**Unique
GLASS
Solutions**

Bespoke Architectural Glass
Glass Balustrades
Shower Screens
Glass doors and Screens
Splashbacks
Juliet Balconies
Glass Canopies
Bespoke Mirrors

07717 741 275
Simon@uniqueglasssolutions.co.uk
uniqueglasssolutions.co.uk

Painswick based



If you haven't visited Painswick Rococo Garden in a while, May is the perfect time to pop by. The Garden is bursting into life – zingy new growth on the shrubs, flowerbeds filling out beautifully, and a stunning mix of colours everywhere you turn. One of the seasonal highlights is Aquilegia (also known as columbine). Its delicate flowers are said to resemble a cluster of doves – a lovely little detail to spot in both the meadow and borders.

Towards the end of the month, look out for bold clumps of Iris in blues and yellows, and breathe in the spicy scent of Sweet William in the Exedra Garden. The woodland floor is laced with wild garlic too – we're putting it to good use in the café, alongside fresh leaves from the Kitchen Garden.

We're thrilled to welcome back the En Plein Air painting competition after last year's fantastic debut. Over 75 artists will be capturing the magic of the Garden live – a real treat for painters and onlookers alike. Also returning this month is the ever-popular Cotswolds Dogs & Cats dog show.

The Garden will be open daily for May half term (24 May–1 June) with a bee-themed family trail. For the rest of the month, the Garden is open Wednesday to Sunday.

Afternoon tea is now available to book – and it now includes Garden entry!

For all the details, visit www.rococogarden.org.uk.

Marta Gardner

Painswick Music Appreciation Group

A Celebration of the Oboe and the Requiem Mass

In her early days Joyce Barrus had learned the oboe. She brought along her instrument as well as a clarinet to demonstrate differences between the two, not least the oboe's sharp mouth piece creating health and safety issues for the marching band! She illustrated her talk with delightful recordings of compositions with orchestra, string quartet and organ ranging from Bach and Albinoni and the lesser known Zipoli, Cimarosa and Marcello from the baroque. Mozart's supreme 1777 oboe concerto dominated and the 20th century was represented by Richard Strauss and RVW who both composed concerti in 1945 and 1944 around the end the Second World War. Lighter pieces by Binge (The Watermill) and Gabriel's Oboe from the film the Mission were much enjoyed as was the finale of Swan Lake which showcases an oboe solo.



Later in the month Ann Williams, with perfect timing on the eve of Good Friday, gave the final presentation of the season illustrating requiem masses from the 18th century to the present day. Although no one would dispute the pre-eminence of the Mozart (strongly featured in the film Amadeus) she began with a personal favourite, the little known George Lloyd Requiem composed shortly before his death and dedicated to Diana, Princess of Wales. Ann commented that her research had revealed the demise of the composer frequently followed their compositions. The well known Pie Jesu from Faure and Lloyd Webber were contrasted along with extracts from Brahms, Verdi, Dvorak and John Tavener. She managed to inject some joyful moments particularly the Hosanna sung by Placido Domingo from the Lloyd Webber and the power of the Rex Tremendae from the Mozart.

Next meeting in the Town Hall: 2:30 PM Thursday May 8th (note date change) End of Season Party (bring a favourite disc)

Michael Grey

Library Book Club

The next meeting of the Library Book Club is on Monday 12th May, 1.30-2.30 and we will be discussing In the Full Light of the Sun by Clare Clark. Following that, the next date is Monday 9th June and we will discuss The Song of Achilles by Madeline Miller. Our meetings begin with tea/coffee and an informal chat, so if you would like to meet new people who enjoy reading, please do come and join us. For further information email painswicklibrary.bookclub@gmail.com



Foodbank

Our next collection will be on Wednesday 14 May. Volunteers will be in the Stamages Lane car park from 10am - 12 noon. The top items required by the Foodbank this month are: pasta sauces, tinned ham and corned beef, marmite and jam, tinned rice or custard, laundry detergent, instant coffee, tinned potatoes or veg, multi-pack crisps, fruit juice, squash and Fray Bentos pies. If you are able to donate any items from this list, we would be very grateful. Other non-perishable items will also be received with thanks.

As always, if you wish to make a bank donation, you can do so using the following details: Stroud District Foodbank CIO
Sort code: 09-01-29 Account: 21994911

Thank you!

The Foodbank Team Mobile: 07950 651228

Trees, shrubs or hedges need attention?
Call for a free quote from the local experts.
01452 941922



Trusted with the Painswick Yews for over 35 Years

Trustpilot
★★★★★
Rated 'Excellent'

TRUSTMARK
Government Endorsed Quality

Google
★★★★★
4.9 STAR CUSTOMER RATING

Tree Maintenance Ltd

**Peter Barnfield
Painter & Decorator**
All Interior, Exterior + most DIY work
40 years experience



Mob: 07881 408380
Email: barnfield.peter2@gmail.com



Cotswold Animal Services
Home environment doggy day care and boarding based in Painswick.
Group socialisation dog walks or 1-1's.
Equine care and cat sitting in your home.

+44 (0) 7814 955975
www.cotswoldanimalservices.co.uk

Painswick Music Society

Continuing with the new programme format of mixing the traditional chamber music concert with a broader review of the contemporary classical music scene at the highest level, Painswick Music Society presented the 'contemporary' on Saturday 12th April with a lively and powerful performance by "Neoteric Ensemble".



Neoteric means "a modern person who advocates new ideas", and certainly this is what we were given; a new band format mixing brass - trumpets, trombone and tuba - with saxophones. Not that these instruments are new in themselves. Trumpets date back to 2000BC or earlier, the trombone evolved from the sackbut of the 1400's, the tuba was invented in 1835 and the saxophone in 1846. It was in the 19th Century when valve trumpets were invented.

In the hands of these six extraordinarily talented musicians, section principals from the major orchestras around the country, who are also variously professors or visiting teachers at the leading music conservatoires, we were treated to a stunning demonstration of the capacities of these instruments. And they brought almost every option in the families of these instruments; High E Flat and regular B Flat trumpets, flugelhorns, trombones, Double B Flat tubas, sopranino, soprano, alto & tenor saxophones.

The music was largely written or set by band members or their friends. And such a range of styles; inevitably the combination of the trumpet and tuba gave hints of the pathos of British brass band music; saxophones hints of Poirot; and a number of delves into the various worlds of Jazz and on. The players referred to 'carnival', 'afro jazz', 'Zappa-esque'.

Yet the programme held its balance with arrangements of Vaughan Williams Folk Songs, Gershwin numbers and a very moving arrangement of "The Old Castle" from Mussorgsky's "Pictures at an Exhibition".

These instruments are physically demanding of the players. Lip muscles are delicate and limit the length of each piece of music. This doesn't allow for the extended exploration of musical ideas that can occur in a string quartet or piano sonata. Exceptionally Misha Mullov-Abbado's composition "The Effra Parade" in a few short minutes took us into a captivating musical world fully expressing the sound range of the various instruments.

The concert closed with the electrifying latin themed "Arriba", - "duelling saxes and triple-tonguing trumpeters" - stunning!

The season continues with Anon, a wonderful chamber choir linked to Lincoln Cathedral on 26th April at 4pm (Note time) and concludes with Jess Gillam on 10th May (Returns only). For more details see <https://painswickmusicsoc.co.uk/2025-season/>

Peter Holmes

Gyde Almshouses Charity

Registered Charity Number 201098

Edwin Francis Gyde of Ebley House, Stroud died on 16th March 1894. He bequeathed the bulk of his large fortune for the establishment of charitable institutions in Painswick or in legacy for the benefit of the town. The funding of the Almshouses did not happen immediately. Directions were left that money was to be left in trust and used by the Trustees until suitable land was found.

The opening ceremony was recorded in the Stroud News & Journal in March 1914. At that time, many cottages in Painswick were without water on tap and would not have had a flushable toilet. The Almshouses were built with both, with the added luxury of electricity.

The first occupants were Mr & Mrs William Gyde, Mr & Mrs Jesse Clack, Mr & Mrs Alfred Durham, Mrs Steele, Mrs Joseph Ireland, Mr William Window, Mr James Bridgeman. Mr & Mrs Davies were the first Caretakers.

Vacancy

A vacancy has arisen for an Almshouse at Gyde Road Painswick

Applicants must be over the age of 55 with a local connection

For further information on how to qualify and to receive an application form

Please Contact

Mrs S Baker – Clerk to the Trustees

14 Green Close, Uley,

Dursley, Glos, GL11 5TH

Tele: 01453 860379

Email: gydealms HousesGL6@gmail.com

Closing Date for Applications:

31st May 2025



Kate Rich
walks Painswick's
'Diamond Dogs'
Stimulating Dog Walks
that include the best 'sniffy places' to
delight your dog
Also: Bespoke Dog Sitting Service
Tel: 07785 562616
www.katerich.co.uk

Computer or Tablet Problem?

Computer repairs & upgrades
6 month health check ups
Plain speaking tuition
Internet security
Remote support
Wi-Fi solutions
Easy backup
Hints & tips
Advice
Help


★★★★★
5 star rating

Matt Hughes
07740 167318
www.pcprop.com
£45 ph Est.2003



Gardens Patios Courtyards Terraces Shady Areas
Enjoy Your Garden!
Creative ideas and practical solutions to make
your outdoor space work better for you



All aspects of design, planting and landscaping
offered by experienced local Garden Designer
Please call Sara 07832 351864
gardens.cotswoldcontemporaryliving.com

Probus Club Report

How many of us have successfully resisted the temptation of the brown sign on the M5 showing the way to Cadbury World, which attracts 500,000 visitors per year? Even if you have visited the attraction, have you appreciated the purpose and principles of the Bournville Village Trust?



The talk on Thursday 3 Apr 2025 started with a treat for everyone when Roses chocolates were distributed by Duncan Cadbury who is a past trustee and chair of the Trust, and a relative of George Cadbury, its founder in 1900. George, a Quaker, sought to provide decent quality homes in a healthy environment which could be afforded by Cadbury workers.

George had been moved by the appalling living conditions of his workers in back-to-back slums in central Birmingham. Believing that a happier workforce would also be a more productive one, George set about creating a new factory in the countryside, plus homes with gardens for food self-sufficiency. Over the years the Trust added services and facilities including surgeries, a works council, a pension plan, a hospital, schools, churches and special needs schemes. Since 1967 residents have been permitted to buy their properties.

The Trust goes from strength to strength as a charity and housing association, owning 1000 acres of land, and providing homes for 25000 people. Bournville's green environment continues to reflect the aim of George Cadbury that one-tenth of the estate should be "laid out and used as parks, recreation grounds and open space".

Henry Hall

Blood and gore galore



In April the Local History Society heard a talk on Tudor medicine from Angela Dunsby of the John Moore Museum in Tewkesbury. Wearing clothes from the period and equipped with a huge number of old tools, medical aids and other props, she gave a very entertaining, if rather gory presentation.

Until the 19th century there was no understanding of how germs could cause disease. Many people, including medical experts, instead believed in the miasma theory that diseases were caused by bad air and smells, or by the four humours of the body (blood, black bile, yellow bile and phlegm). If you were wealthy enough you could consult a physician for advice on these aspects. Physicians had up to ten years of university training and charged high fees, but were often reluctant to even touch the body. For more hands-on help, you had to go to one of the barber-surgeons, who combined haircutting with basic surgery – bloodletting, leeches, removing teeth, cutting out cataracts and performing amputations.

In practice though, much medicine was the domain of 'wise women' with some expertise in herbal remedies and other natural materials. There may have been science behind some of their practices, but there was also a lot of tradition intermingled with superstition and religion. They had to walk a fine line between methods that gained them respect from the community and ones that would have them condemned as witches.

In May the annual Society outing will be to Hilles House, the local home of Detmar Blow and regarded as one of the greatest works of his grandfather, also called Detmar Blow and an outstanding architect.

Al Jollans

BANCROFT LIVINGSTON
— BATHROOMS —

Bespoke bathroom design and installation

jake@blbathrooms.co.uk
www.blbathrooms.co.uk



Graham Watts
Carpenter and Joiner

Experience in all aspects of construction
from project management
to the final coat of paint

I am looking for small building/
carpentry projects in the local area

Please call 07850 312984
email alisdairew@gmail.com

Simon Gyde

Carpenter and Joiner

City & Guilds

Purpose Made Joinery

Restoration Woodwork

General Building Services

07768.173726 simongyde@yahoo.co.uk

FRASER HALL

MINI DIGGER WORK: ALL TYPES
GARDEN MAINTENANCE
DRIVEWAYS & FOOTINGS
AGRICULTURAL FENCING
TREE SURGERY
SEASONED FIREWOOD



M: 07766 132 903

FULLY INSURED
BASED IN HARESCOMBE

Julian Telling
Garden Services

****New Service - Green Waste Collection****

We supply 1 bulk (tonne) bag
You fill it, then call for collection - £20.00

Tree Felling, Pruning & Maintenance
Fencing & Fence Repairs, Lawn Cutting,
Strimming, Turfing, Weed Control, Hedge
Cutting & Shaping, General Garden Clearance
Gutters & Patios Cleaned, Powerwashing

07895 224863

Juliantelling@yahoo.co.uk

Kate Mead - A Tribute

Having qualified as a teacher at The London College of Dance and Drama, Kate Mead then spent almost 50 years of her life passing on her love for dance to her pupils; first in Keynsham and then in Gloucestershire. She moved to Sheepscombe in 1981 and to Painswick in 2003. Members of Painswick Players remember with affection her choreographing and teaching them a tap dance routine for their performance of *Stepping Out* in 2002. Although Ballet was Kate's great passion she adored music and was a regular member of the audience at concerts and loved her weekly piano session with Beryl Berry in Cranham. She was also a keen theatre goer and enjoyed sharing her great love for nature with her young granddaughter.

Many locals will have encountered Kate on country walks accompanied, over the years, by a succession of golden retrievers. She was a very friendly, sociable person always willing to join in whatever was going on. She will be remembered as an inspiring teacher and for her delightful, warm and generous personality. Kate is survived by her daughter Alexandra, son-in-law Sharm and grandchildren Raya and Indra.



From Medals to Metals

"Mind-boggling" is not a very literary turn of phrase, but it accurately describes the effect Marc Begg's inspiring life story had on his audience when he spoke to members and guests of Yew Trees WI at their April meeting. The fact that he never stood still while delivering his talk was a good indication of how he has led his life! Raised in New Zealand, where he trained as a sheet-metal engineer, he then devoted his life to professional snowboarding, spending winters winning medals in the northern hemisphere and summers doing likewise in the southern hemisphere. His next move was to London where he gained a Masters Degree in Information Technology before putting his newly qualified skills to use in a variety of jobs all over the world, from Kosovo to Africa. In 2020, as lockdown began, Marc settled in Cirencester, bought a steel fabrication workshop and has since also acquired Kyeburn. This is an award winning studio which creates everything from garden sculptures, barbecues and log baskets to special commissions and collaborations with designers and architects. Marc's designs are influenced by his great affection for New Zealand motifs and his love for the beauty of British historical architecture.

It would take a Beacon supplement to do justice to all that Marc has achieved but one thing that resonated with his audience was his great belief in apprenticeships. He owes much of his success to the fact that on leaving school his father encouraged him to undertake a four-year apprenticeship. He credits this with instilling in him a robust work ethic. Marc loves what apprenticeships have to offer and he always looks to have a minimum of one apprentice on his workshop floor. He also does everything he can to encourage fellow members of Chambers of Commerce to do the same.

At our next meeting, on Tuesday 27th May at 7.30 pm in the Church Rooms, Josephine Murray will give a talk entitled "The Life and Work of a literary translator from the Nuremberg War Trials to Miffy the Bunny".

Celia Lougher 812624

theWI
INSPIRING WOMEN

Cathedral special with Natasha

Natasha Houseago was until last autumn artist in residence at the Rococo. She is an outstanding woodcarver, both artist and teacher, as many here can testify. On 24th May from 10.00-4.00 Natasha will be running a workshop in St Mary's Close, Gloucester Cathedral, offering a chance to learn techniques that were used to build the Cathedral 1000 years ago.

This event is part of Gloucester Cathedral's summer event 'Crafts that built the Cathedral'. Participants need to be aged 16-plus. All materials, tools and PPE will be provided. No experience is necessary and the day will include all aspects of the learning and practice necessary to produce a wonderful item. Carve your very own piece of history to take home.

Interested? Full details can be found on the events section of the Gloucester Cathedral website. This is a golden opportunity to learn and develop a precious and fulfilling, much valued, skill.

Carol Maxwell

Dr Hauschka Organic Facials

Your friends will ask enviously
if you've "had work done..."
But you'll smile secretly,
knowing you look great, naturally.

Book yourself a Dr Hauschka treatment
with **The Organic Beautician**
and treat your skin to the visible difference

text 07961 224560
jane@theorganicbeautician.com

Mention this ad when booking for a free Cleansing Cream
Based in Pitchcombe since 2007

R_V
REGENCY VETS

Proudly independent, caring vets for
Cheltenham and surrounding areas
01242 781381 Home visits
available on request

www.regencyvets.com

CENTRELINE



STONEMASONRY
HISTORIC
BUILDING
REPAIRS
& ALTERATIONS

01452 813892 OR 07967 316038
WWW.CENTRELINESTONE.CO.UK

Fairfax House, Vicarage Street, Painswick, GL6 6XS

ALL STONEMASONRY LTD EXPERTS IN STONE

Drystone Walling; new and restoration
Stone repointing; including lime mortar
Mullion Windows Restored
Any stone repaired or replaced
Local masons with 45 years experience

01452 728949
alan@allstonemasons.com
TEXT / CALL 07823 506499

PAINSWICK HOME & GARDEN

Renovation & Maintenance

- Lawns, hedges, fences, borders
- Landscaping, paving, stonework
- Bespoke-built log stores & bin stores
- Decorating, home repairs & lots more!



Call: 07532 111114

www.painswickhomeandgarden.com

Painswick Surgery Patient Group

Good news from the Painswick front!



One of our members reports the following:

I submitted an eConsult for a minor foot problem around 6.10pm on 19th March. Within 10 minutes I received a text from Reception which confirmed receipt of the consultation and requested that I uploaded a photograph. The text had a secure link to do this. I received a reminder text two days later, which I used to upload the photographs requested. Within an hour I had a further text from the GP confirming a referral to the foot and ankle specialists. A 'Choose and Book' letter arrived with the next post. I did not look until 1st April and chose an appointment at the Winfield Hospital for 8th April. After the appointment I was told I would be on a waiting list and would receive a phone call later that week. On 11th April I was phoned and given an appointment to have the operation on 2nd May. So just over 6 weeks from eConsult to operation date for a non-emergency health problem.

On the other hand:

South Western Ambulance Service failed to meet their improvement expectations for the previous financial year and are the worst performing in the country with an average of 68% compared to the all-England average of 22% missed targets.

Did you know? – that you can access eConsult through the NHS App? Just open the App and click on the 'Services' item at the bottom of the screen. The eConsult option will appear but, as with the Practice website, it is only available during Surgery hours. At other times you will be directed to phone 111. (There is more help for the App in our email bulletin, sign-up at painswickppg@gmail.com.)

Patients in their own home - virtual wards

NHS England has written to local hospitals and health systems urging them to make more use of virtual wards. These are also known as [hospital at home](#) and NHSE says they 'allow patients to get hospital-level care at home safely and in familiar surroundings, helping speed up their recovery while freeing-up hospital beds for patients that need them most'. NHS England say more people suffering from respiratory conditions or heart failure are set to be treated through an intravenous drip or a nebuliser – a machine that turns liquid medicine into a mist that can be easily inhaled – at home, instead of needing to be cared for in hospital. In addition, more people living with frailty will be supported through the virtual ward programme. See <http://bit.ly/3Rl8iCI>

David Perry, Chair



A memorable service

A very special service took place in St Mary's church on Sunday, 6th April. It was very special because it focussed on the confirmation of eight people whose ages ranged from 11 to 78. For them and for their families and friends it was a very notable occasion.

The Bishop of Gloucester, Rachel Treweek, conducted the service which was very well attended. It was a service full of interest including one of the candidates describing how she had arrived at the decision to be confirmed. The eight candidates are all benefice residents, the three youngest, aged 11, 15 and 15, being friends from Cranham.

After the service drinks and snacks were enjoyed in the church, which was a lovely social opportunity for the congregation and candidates to talk happily about this very joyful occasion.

Carol Maxwell



Helen Davis, Joseph Berry, Bishop Rachel, Pauline Baylis-Jones, Evie Clapton, Emily Clapton, Olive Berrisford, Suzanne Hutchinson, Jamie Jani

**IRONEASY**

**Professional Ironing,
Dry cleaning, Laundry,
Repairs/Alterations
& Shoe repairs**

COLLECTION & DELIVERY AVAILABLE

**Tel: 07952006820
www.ironeasy.biz**

**LIAM PHIPPS**

General Builders & Stone Masons
'The complete building service'
Extensions, Renovations, New Build
Carpentry
Roofing
Kitchens

**Liam: 07540 246133
liam.phipps@hotmail.com**

Exedra Nursery

Specialists in perennials
David Austin Roses
Climbers, alpiners, shrubs & herbs
Peat free compost
Gardening accessories & gift vouchers

PAINSWICK ROCOCO GARDEN
OPEN TUES - SUN 10 - 4
07487 537026

Parking: Necessary Changes for a Better Future

The Painswick Centre has long been a vital hub for our community, hosting a wide array of activities, events, and services that enrich village life. However, like much of Painswick, there are challenges associated with parking on site. To ensure the long-term accessibility and functionality of the Painswick Centre for all users, some necessary parking restrictions will be introduced starting 1st June 2025.

These changes are not being implemented lightly, and they follow careful consideration of feedback from centre users and local residents. The primary driver behind these restrictions is to address the increasing issues of congestion and the difficulty many visitors to the Centre face in finding a parking space.

Currently, the open nature of parking at the Painswick Centre, while convenient in the past, has led to several problems:

- **Overcrowding:** The limited parking spaces are often quickly filled, sometimes by individuals not actively using the centre's facilities. This makes it challenging for those attending events/classes to find a spot.
- **Limited Turnover:** Without any restrictions, vehicles can remain parked for extended periods, reducing the availability of spaces for other users who may only need to visit the centre briefly.

The introduction of parking restrictions aims to mitigate these issues and create a more organised and equitable parking system. From 1st June, parking in the Painswick Centre car park will be limited to those residents with permits issued by the Painswick Centre and others who are attending activities at the Centre. From this date, cars parked in the Centre that do not have permits or do not belong to people attending the Centre will receive a parking ticket and a fine for £100.

We understand that any change can bring about questions and potential concerns. The Painswick Centre Trustees are committed to ensuring a smooth transition and signs that will be in the car park will explain this clearly. The introduction of these parking restrictions is a proactive step towards safeguarding the long-term viability and accessibility of the Painswick Centre. By creating a more organised and fair parking system, we aim to enhance the experience for all users, reduce inconvenience, and ensure that the centre remains a welcoming and accessible focal point for our community. We appreciate your understanding and cooperation as we implement these necessary changes.

The Painswick Centre Trustees.

Rooms for hire

Looking for a venue that won't break the bank? The Painswick Centre offers a selection of rooms available for hire at very reasonable rates, perfect for a variety of events from meetings and workshops to small parties and gatherings.

The Beacon Hall: Versatile and Spacious

The Beacon Hall is the largest space available, boasting a generous 163m² of floor space with a standing capacity of 200 people. It features a stage, making it ideal for performances, presentations, and larger celebrations such as wedding receptions and parties. The hall also comes equipped with its own kitchen and a fully licensed bar. For seated events, it can accommodate up to 150 people in a theatre/concert layout, 120 at long tables, or 100 at round tables.

Reasonable Rates: The Beacon Hall is available at an hourly rate of just £28, a 4-hour rate of £104, and a day rate of £208.

The Cotswold Room: Picturesque and Adaptable

Situated on the first floor, the Cotswold Room offers 54m² of space and enjoys lovely views across the valley. With a standing capacity of 60 and seating for 50 in a theatre/concert layout, it's well-suited for meetings, fitness activities, art or craft displays, and smaller parties. The room features a professional picture hanging system for exhibitions and blackout blinds for presentations or photography. A stair lift is available for easier access.

Excellent Value: Hire the Cotswold Room for only £17 per hour, £68 for 4 hours, or £136 for a full day.

The Green Room: Bright and Functional

The Green Room is a bright, upstairs room offering 32m² of space with a standing and theatre-style capacity of 20 people. It includes a separate, fully fitted kitchen, good Wi-Fi, and also benefits from scenic valley views. This room is ideal for smaller meetings, workshops, and classes. Its name hints at its potential use as a backstage area ("green room") with access to the rear of the Beacon Hall stage, making it a convenient addition for performances.

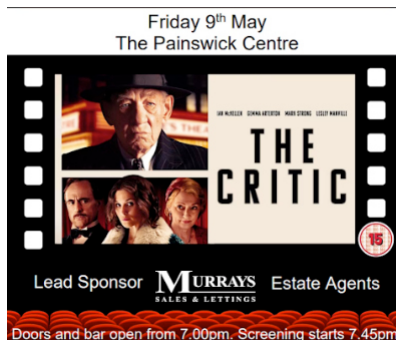
Budget-Friendly Option: The Green Room is available at an affordable rate of £12 per hour, £48 for 4 hours, or £96 for the entire day.

For those needing multiple spaces, the Cotswold Room and the Green Room can be hired together at a preferential rate – be sure to inquire with the Centre Manager for more details. To check availability, book a space, or arrange a viewing, please contact the Centre Manager at 01452 814567 or via email (manager@painswickcentre.com). The Painswick Centre is a community facility committed to offering affordable and flexible spaces for your events.

Ceri Chaplin



Friday 9th May



THE CRITIC is a deliciously dark and sharp-witted thriller set in 1930s London featuring an all-star British cast including Ian McKellen, Gemma Arterton, Mark Strong, Ben Barnes, Alfred Enoch, Romola Garai and Lesley Manville.

When the most feared and vicious theatre critic in town Jimmy Erskine (McKellen), finds himself suddenly in the cross hairs of the Daily Chronicle's new owner David Brooke (Strong), he strikes a sinister Faustian pact with struggling actress Nina Land (Arterton) who is desperate to win his favour.

Book your tickets and drinks in advance at <https://www.eventbrite.co.uk/e/wick-flix-the-critic-tickets-1332106318859?aff=oddttdcreator>

Tickets will also always be available on the door.

An outstanding Painswick business

Goddards garage finally closes

Goddards Garage has finally closed. As one of the oldest businesses in Painswick there is no-one who can remember a time when it was not in our midst. Furthermore it may well have been the oldest family-run garage business in the country. Five generations of Goddards have been involved for well over 100 years.

The first record of the garage is in a Kelly's Directory of 1914 and it is possible it was established before that date. John William Goddard was tenant of the Falcon Hotel and was running his garage business there, later including petrol pumps on the pavement at the front. The garage continued to be named J.W.Goddard throughout, until its final closure this year.

John's sons were involved and Tom took over when his father died in 1926. Over the next few years the business developed and grew to include lorry servicing and coal deliveries. Tom's son, John Richard, joined the business and in the late 1940s the garage moved from the Falcon to newly renovated and converted premises, previously a builder's yard dating back to the 1700s, in Cheltenham Road where it remained until the closure.

By the 1950s the service offered was very wide ranging – repairs, petrol, coal, paraffin, taxi service and then M.O.T. inspection when testing was introduced in 1960. John Richard took over in 1967. The coal deliveries stopped but by this time there was also a range of stock items on sale as well as the services.

In the 1980s John's son, Robert, joined his father in the business. He had been a design tool draughtsman with RHP aerospace and in the mid-1990s he became a partner in the garage business with his father. 2011 was the year Robert celebrated 100 years of the business being registered as a motor vehicle repair garage. Later, Robert's son, Michael, joined his father in the garage and they continued working together until the closure.

Five generations of Goddards have served Painswick residents loyally, professionally, reliably for well over 100 years. Michael continues to work in the industry in Gloucester. Robert and Karen can look forward to a much deserved retirement in Cornwall. Meanwhile, Robert is still offering a taxi service. We wish them the very best for the future and many Painswickians have expressed their real gratitude for the excellent and outstanding service Goddards garage has provided over many years.

Carol Maxwell

Robert and Karen have written a full history of the business in Painswick Chronicle No. 26.



Robert & Michael in the workshop

FAMILY TREE
FUNERAL COMPANY
No.1 Middle Street • Stroud GL5 1DZ

A family-run independent business
with a fresh approach to funerals

End-of-life planning and support

0 1 4 5 3 7 6 7 7 6 9
email: contact@familytreefunerals.co.uk
WWW.FAMILYTREEFUNERALS.CO.UK

SALLY ELLWOOD
LIME

Lime wash, pointing, render and plaster
for period and listed buildings.
Art and design.
Tuition and consultancy.

07940 108 333
www.sallyellwood.com
info@sallyellwood.com

Meditation on Twin Hearts

Relax, sit comfortably and enjoy this
meditation to reduce stress, increase
happiness and leave you with a sense
of inner calm.

1st Tuesday of month 1.30pm
Green Room, Painswick Centre
£5 donation entry to MCKS Charity

Get in touch or just come along!
Rachna Murray 07732811755
info@rachnapranictherapy.com

LARWOOD
GARDEN SERVICES

MOWING AND LAWN CARE
WEEDING, PRUNING AND PLANTING
HEDGE CUTTING AND CLEARANCE
FENCE AND SHED REPAIRS

TRUSTED LOCAL COMPANY, ESTABLISHED 1998.
FOR A FREE ESTIMATE CONTACT NEIL ON:

07816 496087
ENQUIRIES@LARWOOD.NET

PAINSWICK
CURTAINS & BLINDS

Vicki Moore

Beautiful, quality
curtains, blinds and soft furnishings
Custom made by hand

01452 810707
07810 646714
vickimoore@gmail.com

THE SHARPENING SERVICE



Kitchen knives, garden tools,
..... and most other blunt items!
For a speedy turnaround

Call **Rupert Miles in Bisley**
01452 770788
milesrup@btinternet.com



Painswick Easter Egg Hunt



CHORLEY'S AUCTIONEERS

Cotswolds Heritage since 1862

Complimentary Auction Valuations

Monthly Auctions of Art & Antiques

Probate & Insurance Valuations

Open Valuations every Thursday
9.30am-1pm

01452 344499 info@chorleys.com

Prinknash Abbey Park GL4 8EU

B. Pearse Carpentry

"A complete woodworking service"

All internal / external work
Bespoke Joinery supplied and fitted
Staircases, kitchens, wooden flooring
Timber framed buildings / extensions
Traditional cut Roofing
Renovations / Alterations

Ben.pearse@hotmail.com

07791 639 635

BARDEN CLEAN

Carpet & Upholstery Cleaners

Professional, environmentally
friendly carpet cleaning service.
Serving the area for more than
15 years. Call For a Free Quote
Contact www.bardenclean.com
or Call us at 07452 950509

Because Your Carpet...
...Deserves the Best

Painswick Gardening Club

At our April meeting, Nick Morgan gave us a lot of advice and tips to help us make the most of our greenhouse(s). He originally trained at Pershore, worked with the Royal Horticultural Society (RHS) in their Wisley greenhouses and retired to Gloucestershire. Nick stressed the importance of controlling the environment in our greenhouse. One of the advantages of having a greenhouse is starting seeds early. So, as much light as possible in February. Ideally your greenhouse should be situated E/W, side on to the sun in the south. Clean the glass thoroughly. A 1% loss in light is a 10% loss in growth, in springtime. But, then, hydraulic auto-vents are a MUST HAVE in the summer as plants get stressed at temperatures over 28 degrees!



On the second Wednesday of this month, the 14th of May, we have Timothy Walker giving us a talk on "EU-PHORBIAS - probably the best garden plants in the world". Tim will be explaining some of the natural history and botany of these spurge. And some of the most desirable cultivars and suggesting some planting associations. An evening not to be missed!

Guests welcome @ £5. We meet in the Town Hall at 7 pm for tea/coffee and perhaps a glass of wine, ready to start the talk at 7.30pm. Come and join us – Wednesday evening 14th May.

Joyce Barrus

Friday Club

On April 4th Malcolm Lewis gave a talk on "Birmingham City of Culture". Being Brummie himself, Malcolm reminded us of Charlie Chaplin's origins in Birmingham.



On Thursday 24th April we visited Dyrham Park for Tulipmania. A beautifully restored house to look around, coffee and lunch in the Café, a gift shop, plant sales and second-hand bookshop

Looking forward to this month: On May 2nd we have Glos. Health & Care NHS Foundation Trust helping us with "Managing Memory Together". Enq. Ann 812344.

On May 16th John Putley is tracking Gargoyles and Grotesques in Gloucestershire. Enquiries Ann 812344

Another Outing on Friday, 30th May. This time a minibus trip to Lechlade and a Thames Boat Cruise. Prebooking on 810878

Gill Padbury

We are very sorry to hear that Gilly Young died last month. Better known to many as Gilly Padbury before her marriage to Bob. She moved to Painswick in early 2004 and worked at the Painswick Hotel before retirement. She took an active part in village life, enjoying bellringing- with the Ancient Society of Painswick Youths - as well as membership of many local clubs, including the Friday Club, Yew Trees WI and the Cotteswold Naturalists' Field Club. She had a natural flair for performance and, on many occasions, entertained Friday Club members and others to witty monologues and poetry recitations. Her help on the Friday Club Committee was much appreciated until her move in 2021 to Lincolnshire.

Joyce Barrus

Painswick Farmers Market Relaunch

There's a fresh buzz at The Painswick Centre as the Thursday morning Farmers Market is revitalised. Relaunched with a renewed focus on local, ethical produce, this weekly market is more than just a place to shop – it's a community cornerstone that needs the support of the village to thrive.

Shoppers can now enjoy high-welfare meat from Frocester Fayre, a family-run farm renowned for its sustainable practices and traceable, quality cuts. For those who like a little heat, don't miss the handcrafted chilli sauces made right here in Stroud – with the chillies themselves grown locally, too. It's a true seed-to-sauce story that reflects the spirit of our market: independent, ethical, and proudly local.

Alongside these highlights, the market features a selection of seasonal veg, handmade goods, preserves, and fresh bakery treats and bread. The Centre's café is also open for teas, coffees, and bacon sandwiches – perfect for catching up with friends or enjoying a quiet mid-morning moment.



We're calling on the community to show their support. A thriving farmers market can bring real benefits to a village like ours – not just in supporting small businesses, but in building connections, boosting local resilience, and bringing life to the centre of Painswick on a Thursday morning.

Please pop by, spread the word, and help us keep this tradition going strong.

The market runs every Thursday from 8am to 10am at The Painswick Centre. See you there! - Use it or lose it!

Rob - Centre Manager

Progress at Le Papillon!

Three months in and we're heartened and touched by the warm welcome we have had from our friends and neighbours in Painswick. We have so many grand plans for growth, and a few of them are starting to come into fruition including ticketed talks with our suppliers, tiny concert live music events, and exhibitions. The best way to stay up to date is to follow our Instagram: @lepapillonpainswick but here are our upcoming events!

Love, Labour & Solitude Exhibition:

celebrating the paintings of local artist Vanessa Wilson! Vanessa is quite possibly one of the nicest people we know and we're so happy to have her work here for the entire month of May. The private view is on Saturday the 3rd May and we hope will see a good turn out! The collection will be for sale with one piece raffled off to raise funds for charity. We have chosen Sunflowers of Stroud. @vanessawilsonpaintings and www.vanessawilsonpaintings.art



Woodchester Valley Wine tasting Thursday 15th May

This private ticketed event will see some of Woodchester Valley's more interesting bottles. In particular we will be tasting their Pinot Précoce – rich, English red made from Pinot Précoce – a variant of the Pinot Noir grape resulting in an early ripening. Smoky mulberries and black cherries on the nose and a few other specialty bottles, paired with cheeses. Tickets will be on sale soon, you can buy them in person at Le Papillon, or watch for updates on our Instagram, and the Painswick Community Facebook page to book online.

Jottings

We do not grow arable crops much locally in our smaller, often sloping fields. Most of them are used for grazing and producing hay and silage. Grassland is very important for taking up CO₂ and storing large amounts of carbon. The above ground biomass is repeatedly reduced by grazing and fire, but grass especially, has an extensive root system which stores up to 80% of the total carbon store. This is why good land management is required in how you use the grazing and looking after the many small animals, insects and birds.

Grazing helps by removing the accumulation of the thick layer of dying vegetation which accumulates on the fields. Removing this thatch lets light onto the soil, enabling seeds to germinate, so producing more vegetation which traps more carbon. Burning the vegetation and adding manure returns nutrients to the soil.

If the soil is bare there will be a lot of water runoff. So you need to keep soil covered with grass or other foliage to slow the movement of water through and out to streams and rivers. Grass, plants and trees help in slowing water movement, reducing land slippage and flooding, and helps reduce drought conditions.

Good grassland management can reverse some of the carbon loss due to deforestation. Planting by over seeding with legumes and clovers will cut out some of the use of nitrogen fertilisers. Over seeding with the right herbal mixtures helps soil fertility, also providing food for birds and insects. Herbal mix hay and silage are much better foodstuffs for farm animals, producing better quality meat.

It's important to control the grazing to keep the grass at an optimum height while growing, at least 5 cm. If grazed too short, growth is reduced. Less intensive grazing reduces soil compaction and increases plant root depth. Leave some areas of longer sward to provide seed for winter bird food and provide cover for invertebrates. Herb seeds provide more plants to provide food – nectar and pollen - for pollinators, so essential in crop production.

We need the cycle of growing grass to feed our cattle to produce manure to feed our fields to produce more grass. Using herbs like clover and wild flowers “improve” our grassland, increases pollinators and the meat from our animals is improved by this herb enriched feed.

When in our valley we have different types of soil and rock this also means at times different ways are needed to look after our crops. Also the height above sea level makes difference with Gloucester city area a week earlier than us.

Martin Slinger

Annie's Gardening

An extra pair of helping hands

General gardening services
Beds and borders services
RHS level 2

07899 958436

Email: anniesgardening2@gmail.com
Website: www.anniesgardening.co.uk

Children's Butterfly Competition:

We are hosting a children's art competition and exhibition. The deadline for entries is the 27th May, the exhibition will be open from the 2nd- 12th June; private view with Apple Juice and Fairy cakes will be on Friday the 6th June!



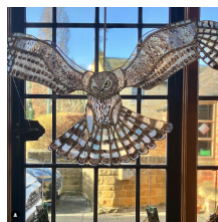
To enter, participants must post or drop off their artwork (which can be any format or medium) to Le Papillon, New street, Painswick, GL66XH, opposite the Pharmacy. The artwork must be delivered in a protective envelope, packaging, or sleeve, along with a 50p entry fee and the following information:

- The artist's full name
- Age
- Parents' Contact email and number

Butterfly themed prizes to be won! Entry categories are 2-6 years and 7-11 years

Volunteers needed! Let us know if you can help set up the exhibition on the 2nd June.

Site Festival Art Trail:



We are a stop on the Site Festival Art trail from the 13th -14th and 21st -22nd June, Hosting the fabulous Sarah Davis, Stained Glass Artist, for the duration (and the week in between!) You can have a look at Sarah's work on her Instagram @sarah-davisglass and website www.sarahdavis-glass.co.uk

Emma Leyfield

St Michaels BISTRO

Lunches: Wed - Sun 12.00 - 15.00
Evenings: Tue - Sun 18.30 - 22.00

tel: 01452 203306
07877 282 446

marinpetre1967@gmail.com

Take-aways available

The Painswick Centre - alive with the sound of live music at the heart of Painswick

In June two brilliant bands bring their unique styles to the beautiful Beacon Hall.

Swing from Paris

First up, on the 21st June, we welcome Swing from Paris – a charismatic quartet inspired by the stylish sounds of Django Reinhardt and the Hot Club of France. Expect dazzling gypsy jazz, beautiful melodies, and toe-tapping rhythms as they perform both classic standards and modern tunes with a vintage twist. Perfect for jazz lovers and anyone who enjoys a night of lively, sophisticated music.



Faeland

Then on the 28th June, we're thrilled to host Faeland, a contemporary folk duo (with a full band) known for their rich harmonies, heartfelt lyrics, and enchanting sound. Combining acoustic instruments with a fresh, ethereal energy, Faeland has captured hearts across the UK – and now they're bringing that magic to Painswick for a special, intimate performance.

These gigs are part of our growing programme of live events at The Painswick Centre, and we'd love to see our community come out to enjoy and support them. Bring your friends, grab a drink from the bar, some street food from the car park, and settle in for two unforgettable Saturdays.

Tickets and full information available at painswickcentre.com – don't miss out!

Rob - Centre Manager

Sensory Dance Workshop - Lets dance!

Be inspired to embrace dance as a way to improve your health, connect with others, and have fun!
 Move into Joy - the mission is to get more people dancing together, regardless of age, fitness level, or experience.

Claire is passionate about dance and movement for the wellbeing of everyone. She is offering a joyful 2-hour guided sensory dance movement playshop at The Painswick Centre on Monday 19th May 10.00-12.00, designed especially for men & women 50+ who want to bring play, presence, and gentle conditioning back into their lives.



This event will bring greater awareness of how dance and movement benefits mental and physical health.
 This one off introductory session will be followed by a six week course on Monday mornings 10-11am, starting in June.

To secure your place book here:
<https://clairelewis.co.uk/events-and-retreats>

Historic crimes in May

1825 Henry Beard, age 15, 4ft.10ins, hair light brown, eyes light grey, long face, wide mouth, mole on right shoulder, cloth worker. Guilty of stealing five promissory notes value £5 property of Joseph Gardner. Sentence - transported for life.

1835 Richard Ayers. Evaded paying a toll of 3d when driving three beasts through a toll gate at Painswick. Fined 10/-.

Henry Wager, age 20, 5ft.5ins, hair brown, eyes grey, much pock pitted in the face, mole on neck, mole between shoulders, can read and write, groom. Guilty of assaulting Charles Gardner and putting him in fear of his life and stealing from him with force and violence a silver watch, a gold seal, a pocket book, two keys, a hat and a silk handkerchief. Death, commuted to transportation for life.

1855 Three boys, Joseph Power, James Partridge, Henry Woodward, the two former 12 years of age, and the latter neither he nor his father knew how old, charged with having maliciously set fire to a hedge at Painswick, the property of W.Capel Esq., committing damage to the amount of 2/-. All three pleaded guilty but Woodward's father saying he did not understand the meaning of it, the charge was again read to him, when he pleaded 'not guilty'. With no evidence of Woodward's identity he was discharged with a reprimand. Partridge's father contended there was no evidence against him and that he could not be convicted. He was reminded that the boy had pleaded guilty. He said the boy did not understand it and that he was as much entitled to withdraw the plea as Woodward was. Mr Winterbotham said that could not be done now, and sentenced each of the two boys to a fine of 6d, 1s damages and 4/6 expenses, or in default, to be committed to Horsley gaol for three weeks. Neither of the boys' parents could pay the money and the prisoners were therefore removed in custody. *Stroud Free Press*

1875 Blanche Wood, age 10, charged with stealing 1/10 from Miss Betts of Byfield House. Money having been missed previously some was marked and placed in dairy where prisoner had access. Some of the marked coins were found on her when searched outside. The Bench, to save the girl from the taint of gaol, sent her to the Bristol Industrial School for Girls, till she was 16 years of age. *Gloucester Journal*

1885 John Smart, age 54, 5ft.4ins, hair dark brown, labourer. Begging. 14 days hard labour.

Edward Painter, drunk and disorderly and making a great row in Tibbiwell Lane. Fined 9/6. *Gloucester Citizen*

1905 James Alder and Wm. Ryland, labourers, summoned for being drunk, acting in a disorderly manner, shouting and using very bad language in St Mary's Street. Fined 14/- each. *Stroud News*

Carol Maxwell

Painswick Sports

assembled by John Barrus

Painswick Bowls Club

Start the late May Bank Holiday weekend with some fun on the bowling green!

In conjunction with Bowls England, Painswick Bowling Club is presenting

THE EVERY GENERATION GAME

....from – 8 to 80 +.....anyone can have a go....

Friday May 23rd anytime between 2pm – 8pm

It's FUN..... It's FREE..... It's FLEXIBLE

Just turn up (and bring family and friends) – no booking required – equipment provided.

Friendly help on hand if needed including two qualified coaches ready to take newcomers from a standing start (literally) to match readiness in just 15 minutes!!!

After that it's up to you.....

We can help organise a friends/family game. You can try the prize winning TARGET PRACTICE or simply enjoy a drink and a BBQ at the terrace bar (with stunning views and ridiculously low prices....) Access from the top of the Painswick Centre car park.

Further information from Richard: r.k.odoherty@gmail.com



Falcon Bowling Club. Founded in 1554.

The Falcon Bowling Club are having an Open Day on Saturday May 10th commencing 2.00pm

We are a very friendly and sociable Club and welcome new Members whether they are established bowlers or men or ladies who want to see if they enjoy bowling if they have not bowled before.

There will be bowling on the Green—short mat bowling—target bowling and a bbq afterwards.

Our excellent bar will be open!

This will be a fun afternoon and was so successful last year that many new Members joined who have proved to be not only keen bowlers but have become involved with assisting in Falcon Club matters.

We supply the bowls and all you need to do is to ensure you have flat shoes when bowling and enjoy the gorgeous surroundings we are so lucky to have.

We are situated behind the Falcon Hotel in the middle of this lovely village.

We look forward to welcoming you on Saturday May 10th at 2.00pm

John Newhill.

Painswick Football Club

Painswick FC vs Lydbrook Athletic 5/4/25

The match started off very static with both teams trying to identify the opponents' potential threats and weaknesses. But then Painswick's Dave Creed weaves into the Lydbrook's box, winning the home team a crucial penalty. Creed steps up to take it but is denied a goal by a great save. Despite the penalty miss, Painswick battle on. Stop-start football leads to a corner for the away team in which their no.10 towers over everybody and powers the ball into the bottom corner. 1-0 Lydbrook. As the referee blows for the half time whistle, the home team know they must turn this around.

In the second half, although Painswick are playing fluid football, Lydbrook steal another goal. Brilliant dribbling by their no.7 who whips in a great cross that's tapped home by no.18. The home team now have a mountain to climb. Painswick look like a completely different team to previous matches. Myles Cooper drives down the wing and plays a great ball, coolly slotted in by Painswick's no.9. The game is back on! In the dying seconds, Painswick have a glimmer of hope as Creed is played a great ball which he slots into the corner of the goal. But the linesman rules it out for offside, ending the game in a controversial loss for the home side. 1-2 to Lydbrook. Painswick are now 4th in the Gloucestershire Northern Senior League and there is still a chance of promotion to Division 1. They only need 7 points. Can they re-find their usual form?

Nesty Coles

GROUNDWORKS - DRAINAGE
EQUESTRIAN WORKS
LAKES - PONDS - WATER FEATURES
FENCING - DECKING - HEDGING
DRIVEWAYS - PATIOS
TRADITIONAL BUILDING WORK
ALL PASSIONATELY UNDERTAKEN

GROUNDWORKS
LANDSCAPING

BLC

BUILDING
PROFESSIONALS

PLEASE CONTACT
BEN LIVING
01452 812036
07702 984711
enquiries@blc.uk.com
www.blc.uk.com

myhealthpal.co.uk

**Private Health Insurance
Broker in Painswick**

AVIVA AXA
Bupa Vitality
The Cooper WPA

You May be Able to Change Insurer and
Maintain Cover for Pre-existing Conditions

01453 621250
George@myhealthpal.co.uk

**Paul Morris Builder
Limited**

Extensions - Renovations
New Builds
Kitchens & Bathrooms
Landscaping
Electrics - Plumbing

01452 814524

**FEDERATION OF
MASTER
BUILDERS**
fmb.org.uk

07818 087375
paulmorrisbuilderltd@gmail.com
www.paulmorrisgeneralbuilding.co.uk

Painswick Cricket Club

The 2024 season was an historic one for the club in many ways. The club fulfilled fixtures in Adult cricket, with three Saturday sides alongside some Sunday cricket, but this does not scratch the surface of the efforts across the wider club and community. Our Women's side had a great first season, competing in their league and cup competitions and surpassing early season expectations. It was also brilliant to see four women playing in our Saturday sides too, all contributing positively on and off the field. Our youth section has continued to grow under the stewardship of Dom Barnard, supported by an army of coaches and parent helpers that allowed us to fulfil fixtures at under 19,15,13,11,9 alongside our



girls team continuing to go from strength to strength. Personally the highlight of the cricket season is watching over 100 children enjoying their cricket on a Friday night, whilst their parents enjoy the facilities off it!

The club have secured the services of Benny Howell for 2025! Benny will play when his commitments with Hampshire and Birmingham Phoenix allow. This is an exciting opportunity and is a new approach for us as a club, partly made possible through the decision not to pursue an overseas player for the upcoming season. I am sure we all look forward to seeing such a special player grace Broadham this year.

It is also great to have representative honours in the team, with Painswick players playing for district sides, Gloucestershire Girls elite pathway, Gloucestershire women, Gloucestershire and England over 60's!



All of these achievements wouldn't be possible without enormous commitment from players, volunteers, sponsors and supporters alike, and I hope that the coming season will bring as much joy, fun and excitement for all of us.

We would love you to join us this year, spectators are very welcome with home fixtures every Saturday, youth training Friday nights, girls training Monday and seniors Thursdays.

Andy Barnard Club Chair Painswick Cricket Club 07368587788

Also at Broadham on the 12th April Painswick Rugby Club

..were holding their annual Jack Mitchell Memorial Day with BBQ and activities for the children. The match was played between the Painswick Allstars v Cainscross Barbarians. Both teams were combinations of local players all coming together to support the Jack Mitchell memorial day. The final score was Painswick Allstars 35 - 29 Cainscross Barbarians.



Community Supported Agriculture in Sheepscombe

Fresh organic veg grown locally
& support a local business

Choose from:
⇒ A set box of seasonal veg, or
⇒ Order what you want from our list of available items

Local delivery - Painswick, Edge, Stroud etc

Get in touch to find out how to become a member
01453 700011
info@lcmgstroud.co.uk
www.lcmgstroud.co.uk



**ADC PRIVATE HIRE
(TAXI)**
Andy Cox

**01453 755707
07966 235775**

All Destinations
www.taxis-stroud.co.uk
adcprivatehire@btconnect.com

Your local area electrician

 **MJBoon**
Electrical Ltd

07773 626241
matt@mjboonelectrical.co.uk
www.mjboonelectrical.co.uk

- Free estimates and advice
- All aspects of electrical work undertaken

 **APPROVED CONTRACTOR**

A Tale of Two Mansions and Final Spring Talks.



May signals the end of our winter programme of talks with a meeting on Wednesday 7th May at 2.30 pm in the Painswick Centre when Malcolm Watkins will give a talk called 'Casting Stones at Napier's

Bones', the historic rise of maritime trading and commerce leading to early portable computing techniques. Following her entertaining presentation last year about the Land Girls, Fiona Warin will return to Box Village Hall on Tuesday 20th May at 2.30pm to give us a talk entitled 'Lost the Plot – the history of allotments'. She will be 'digging' into the history of this unique feature of British life drawing on her practical experience as an allotment holder and a manager of council allotments. Non-members welcome (£5 charge). No need to book, just drop in (light refreshments provided). For more information contact Paul Wyeth; CNFCLectureSec.pw@gmail.com 07472 021 517. We are very grateful to Sue Bennett and Paul Wyeth who have organised an interesting and broad range of talks for us again this year.



We have also arranged visits to two very different local Mansions. Places are still available; for further information please contact Jane Rowe on cotsnats@gmail.com

• On Thursday 8th May, a morning visit to The Mansion House, Cirencester Park, home of the Bathurst family, where we step through the tallest yew hedge in Europe for a guided tour of the Mansion's State Rooms followed by refreshments. Cost £25 (£28 non-members).

• On Wednesday 4th June, a guided tour of Woodchester Mansion, a Grade 1 listed unfinished Victorian Gothic house, hidden in a quiet sheltered valley about 5 miles south of Stroud. Also followed by refreshments, cost £21 (£25 non-members).

All 45 places on the site visit to the A417 Missing Link at Shab/Crickley Hill on Thursday May 29th are fully booked, but a waiting list for cancellations is available.

For further information about membership of the Club please contact John Elbert, our new Membership Secretary by email: CNFCMembershipSec@outlook.com

Further information about the Club and its activities can be found on the CNFC website www.cotsnatsfield.club

Sylvia May, Email: cnfcsecretary1@gmail.com

Working together across our communities – A Call to Action!

CTAP AGM
Tuesday 20th May 2025 7pm
St Mary's Church rooms



We at CTAP have been reflecting on how we work across our communities with our brothers and sisters, those of faith and those with none to bring help and hope where it is needed.

We need you; your thoughts, ideas and support so please do come to our AGM to help us plan ahead. We will spend a little time reflecting on what we did last year but really want to be future focussed. We will have speakers and visitors to help our thinking. James Turk, the new Chair of Churches Together Stroud will be joining us as will David Drew and Jacqueline Natt from Marah. We want to know more about how we can support those who are homeless in Stroud.

So, this is truly a call to action and we need you there to make this happen.

Ela Pathak-Sen Chair and the CTAP Committee .

Every level of care tailored to you

Try the lifestyle out for size and enjoy 2 nights accommodation FREE with all your meals included plus use of our on-site facilities.*

At Richmond Villages Painswick, we've got the emphasis right where it belongs: on you. Here, every day is yours to shape. From lively social events and relaxing afternoons to state-of-the-art facilities just steps from your door, the choice is yours.

INDEPENDENT LIVING | ASSISTED LIVING | BUPA CARE HOME

RICHMOND VILLAGES
Part of Bupa

To Book

Call 01452 813 902
or email painswick@richmond-villages.com

Richmond Villages Painswick,
Stroud Road, Painswick,
Gloucestershire GL6 6UL

*TSCs apply. Visit richmond-villages.com for special offers for details.

Chloe McCarthy BTEC Nat Dip

Revive Beauty
Chloe McCarthy
Tel: 07859 880641
revivepainswick@gmail.com

Painswick Beauty Room
Three Gables Centre
Cheltenham Rd
Tues 9.30 am - 7 pm
Wed 10 am - 2.30 pm

Cranham Village Studio
* New Location *
Thurs 9.30am - 6pm
Fri 9.30am - 2.30pm

www.revivepainswick.co.uk
With eighteen years experience

Painswick Beacon - Changes over the Years

I have known Painswick Beacon since 2011 and have seen major changes in that time. I have witnessed grazing being re-introduced to the site, initially using electric fence paddocks and breeds such as Old Gloucester cattle, through to now where Nofence grazing is used with the small herd of Dexter cattle.

Nofence grazing has been a game changer on Painswick Beacon allowing areas to be grazed that have not been grazed for 50+ years.



You just need to look at the south and west facing ramparts to see how successful the grazing has been, the ramparts have gone from rank grassland with no obvious wildflowers to now where species such as Ox-eye daisy, Marjoram, Kidney Vetch, Milkwort, Cat's ears, Hawkbits, Bee and Musk orchids all flower to create a vision of colour and the sound of insects fills the air. Many other areas across the Beacon have benefitted from grazing such as the grassland between the 16th and 17th Tees.

Scrub control has returned lost areas back to calcareous grassland and now across the Beacon there is a good mix of scrub and grassland so species such as Duke of Burgundy, Glow worm, Rugged Oil beetle, White and Broad-leaved helleborine and nesting birds can all thrive alongside each other.

In our changing climate it is important to have sites that provide multi-aspects and a variation of habitats so species can move and find their particular required niches. Painswick Beacon offers this climate resilience going into the future making it an important and special site within the landscape.

Painswick Beacon Conservation group together with Painswick Golf Club have achieved remarkable rewards from all their hard work and dedication to the Beacon and have made significant strides in their efforts to preserve and enhance the Beacon for all.

Sarah Meredith – Conservation Officer – Royal Entomological Society

A " Painswick House " in India?!

Reaching The Unreached (RTU) is a grassroots charity which exists to empower the most marginalised and disadvantaged people, especially children and families, in rural South India.

The late founder, James Kimpton, an Englishman who devoted his life to making a difference to the lives of the most vulnerable in this part of the world, was the uncle of friends of ours at university – hence our connection with this charity for the last 40 years or so!

Visiting the charity in Tamil Nadu for the third time in February last year, we were again so touched and humbled to witness the wonderful work being carried out there. We were able to meet our sponsored children, some of whom are now studying at college and who made a long journey to see us. Also, we went to visit "Painswick House", which we funded through donations from Painswick friends and neighbours at a birthday party a few years ago, for a family in a nearby rural community whose hut was inadequate.

RTU's many services are provided entirely by people from the local area in Tamil Nadu and many of their staff are former beneficiaries or grew up in their Children's Villages, including the Director of RTU, Fr. Antony Paulsamy who will be doing a tour of the UK in May.



We are delighted that he will be coming to see us in Painswick and he will be giving a short talk about RTU on Tuesday 13th May, which will be kindly hosted by Churches Together Around Painswick (CTAP) at the Catholic Church in Friday Street, Painswick at 11am. The talk will be followed by refreshments and a chance to buy some handwoven items made by local village women at the weaving company on RTU premises.

For more information about the charity, see www.rtu.org.uk

Delyth and John Allen

PLANNING MATTERS

Information received from the Parish Council

NEW APPLICATIONS

S.25/0472/LBC & S.25/0471/HHOLD
Lullingworth, Stroud Road

Demolition of existing pool building and erection of a single storey enclosure of existing outdoor swimming pool.

S.25/0523/HHOLD Beaconsfield House, New Street

Erection of a single storey outbuilding

S.25/0538/HHOLD 27 Upper Washwell, Painswick

Erection of a single storey front and rear extension.

S.25/0604/LBC Highfield House, Gloucester Street

Erection of single storey infill extension and landscaping works.

S.25/0692/TEL Communication Station (T-Mobile 68616) Painswick Golf Club, Golf Course Road

Removal of existing 15m monopole supporting 2 no. antennas and proposed installation of replacement 24m lattice tower supporting 2 no. antennas, 1no. 300mm dish, 1 no. 600mm dish and ancillary development thereto including 6 no. ERSs on mast.

CONSENT

S.25/0539/TCA 1 Prospect Terrace, Tibbiwell Lane

Taxus baccata 'Fastigiata Yew' tree (T4 Green on map) fell to ground level and stumps ground down.

S.24/2282/HHOLD Painswick Lodge, Painswick

New entrance doors to north elevation (replacing an existing window) & reinstatement of historic doors. Existing door opening closed up. Landscaping works.

S.25/0217/HHOLD Macs Cottage, Kings Mill Lane

Erection of a first floor extension and external raised terrace area.

S.25/0461/TCA Highfield House, Gloucester Street

Fell silver birch and raise crown of beech tree.

S.25/0458/TCA Court House, Hale Lane
Crown lift Lime tree (T1) by 2m all round, 20% Inner crown thin to remove the crossing and rubbing branches.

WITHDRAWN

S.25/0241/CPL Land South Of Edge Road

To change a mud track to a permeable stone shingle track.

S.25/0433/HHOLD Horsepools Piece, Paul Mead, Edge

Erection of detached garage and double carport with hobbies room above, associated access and turning

Property Report

A historic 6 bedroom Cotswold stone property right in the heart of the village comes only rarely to the market, but St. Anne's in Gloucester Street (Hamptons, £795,000) is one such, currently operating as a successful Bed & Breakfast business. Another large property, but in a rather different style is Taliesin on Edge Lane (Murrays, £1.35 million) with 4/5 bedrooms, and also just off Edge Lane is Outside Edge on Blakewell Mead (Murrays, £775,000) with 3 beds.

For those looking for a smaller property, 6 Hyett Close came briefly to the market through Hamptons, but went quickly under offer. 6a Canton Acre (Hamptons, £320,000) a modern semi-detached 2 bedroom house is still available at the time of writing and Murrays are offering 3 Prospect Terrace (£215,000) a one bedroomed property in the middle of a row of four stone cottages just off Tibbiwell, with great views.

Also on Tibbiwell and even closer to the centre of the village, Shoestring Cottage (Hamptons, £795,000) has four bedrooms, a sizeable garden and lots of period character. Further out, Hillview on Beacon Close (Murrays, £695,000) is a beautifully renovated home on the Beacon with 3 bedrooms and Old Greenhouse Farm on Greenhouse Lane (Murrays, £2.25 million) has 6 bedrooms just in the main house as well as three separate one bedroom properties, over 7 acres of land and stable blocks all included. Hamptons Painswick office also has properties in Upton, Elmore, Brimpsfield and The Camp – contact them for details.

Going under offer this month through Hamptons are Hale Lea on Kingsmill Lane, two properties in Pitchcombe – Jenkins on Lurks Lane and Moorea on Halfway Pitch, the Granary at Painswick Court, and Bopoto in Slad, which was offered by the Modern Method of Auction. This method, offering a relatively long auction period together with marketing by the agent, is still relatively unusual, but can for some properties achieve both the best price and more certainty for the seller – ask your agent for more details.

MURRAYS
SALES & LETTINGS

*Leading property agents with
over 30 years experience
selling Cotswold homes*

Offices in Painswick,
Stroud, Minchinhampton &
Mayfair, London

01452 814655



Follow us on social media to get ahead
in your property search



**WITH YOU
FOR EVERY
STEP**

Sales 01452 812354

Lettings 01242 263559

painswick@hamptons.co.uk

Hamptons

THE HOME EXPERTS



Mobile service in the comfort of home

Medical pedicure.

Hard skin removal.

Corn removal.

Re shaping and thinning of nails.

Diabetic foot care and more!

Don't struggle alone.

Book now and let me help.

Call: Lizzy 07387 822770

Regular Village Activities. Please contact Vicky Aspinall on cvasp.26@gmail.com

Mondays	Gentle pilates. Info from Heidi 07970 262538	Painswick Centre 8.45 - 9.45am
	Improvers pilates. Info from Heidi 07970 262538	Painswick Centre 9.50 - 10.50am
	Beginners/improvers pilates. Info from Heidi 07970 262538	Painswick Centre 10.55 - 11.55am
	Ballyhoo modern dance classes. Julie ballyhoochalford@gmail.com	Painswick Centre from 3.45pm
	Community Choir. Contact sophie@sophiesterckx.co.uk	Painswick Centre 7.00 - 8.30pm
	Short Mat Bowls. All equipment provided. 2.00/session	Town Hall 2.00 - 4.00pm
	Mindful Meditation with Kate. kate-beatty.co.uk/07793126234	Painswick Centre 12.30 - 1.00pm
	Painswick Singers. Contact Jean Jones 01452 813545.	Richmond 5.00 - 6.00pm
Tuesdays	Paradise Art Studio evening classes. takepart@paradise-house.org.uk	Paradise House 6.30 - 8.30pm
	Zumba with Martina 07891 194396	Painswick Centre 9.45 - 10.45am
	Painswick Art Club £35/term. Contact Joyce Barrus on 01452 812942	Church Rooms 9.30 - 1.00pm
Wednesdays	Rococo Sprites. See www.rococogarden.org.uk	Rococo Garden 9.45 am
	Strength and Balance class for the over 60s. Contact Trish Tenn on 07956 4666617 or tennpatricia@gmail.com	Painswick Centre 10.00 - 11.00am
	Painswick Bridge Club. Contact Peter Sibley on 812126 or Margaret Wilson on 812305	Church Rooms 6.45pm
	Table tennis. Contact David Harris on 07453 027766. £5.00/person/session	Painswick Centre 7.30 - 9.00pm
	Yoga with Kate. www.kate-beatty.co.uk/07793126234	Painswick Centre 7.30 - 8.45pm
	Classical Pilates Mat Classes Jo on 07968 799741 or info@daleypilates.co.uk	Painswick Centre 10.30 - 11.30am
	Strength and Conditioning Circuits. www.lovelifeladies.co.uk	Painswick Centre 12.30 - 1.30pm
	After school art classes. Term time only. classes@painswickcentre.com .	Painswick Centre 3.45 - 5.15pm
Thursdays	Weds Pop-in. A warm space to join others over a cuppa and perhaps try a new skill. Contact Sandra Glass on 814186	Town Hall 10.00 12.00pm
	Morning Market	Painswick Centre 8.15 - 9.45am
	St Mary's Mums, Contact 07833 727701. Term time only	Church Rooms 9.15 - 10.45am
	Nurturing yoga. Contact Kim on yoginikim@icloud.com	Painswick Centre 9.30 - 11.00am
	Vinyasa Yoga. Contact Kim on yoginikim@cloud.com	Painswick Centre 11.15 - 12.45am
	Tai chi. Contact Joe on 07960 753782	Painswick Centre 1.30 - 2.30pm
	Dog Training Club. Contact Fiona Chapman on 01452 812462 or fiona.chapman123@btinternet.com	Painswick Rugby Club 9.30 - 12.30pm
	Qi Gong Classic Exercise - jeffdocherty@yahoo.com	Town Hall 9.30 - 10.30am
Fridays	Classical Pilates Mat Classes. Contact Jo on 07968 799741 or info@daleypilates.co.uk	Town Hall 5.45 - 6.45pm
	Takeaway Food Night	Painswick Centre 5.00 - 8.00pm
	Yoga for Backs. Contact Kim on yoginikim@icloud.com	Painswick Centre 9.30 - 11.00am
	Ballet with Claire Tracey. Contact BalletClaire@outlook.com	Church Rooms 9.30 - 10.30 am
	Painswick Community Hub Café. All welcome	Town Hall 10.00 - 11.30am
	Church Choir Practice. cgsain:btinternet.com or 01453 822998	St Mary's Church 5.30 - 6.30pm
	Classical Pilates Mat Classes. Contact Jo on 07968 799741 or info@daleypilates.co.uk	Church Rooms 11.00 - 12.00pm
	Painswick Baby and Toddler Group - Term time only	Youth Pavilion 9.30 - 11.30am
Sundays	Mass	Catholic Church 8.30am
	Quaker Meeting for Worship	Meeting House 10.30am
	Aikido www.gloucestershireaikido.club .	Painswick Centre 8.30 - 11.00am

Village Diary

Please let me know your club and society dates for the diary on cvasp.26@gmail.com

May

Sat	3	Painswick Beacon published		
Tues	6	Morning Prayer	St Mary's Church	9.00am
Weds	7	Cotteswold Naturalists: Casting Stones at Napier's Bones - Malcolm Watkins Enq 07472021517	Painswick Centre	2.30pm
	7	Holy Communion	Richmond	11.30am
Thurs	8	The Arts Society: Opium - seduction, greed, art - Amanda Herries	Painswick Centre	10.00 for 10.45am
Fri	9	Painswick Community Hub: VE themed coffee morning - cakes, music, 40s style dress or red/white/blue. Donations to British Legion	Town Hall	10.00 - 12.00pm
	9	Wickflix: The Critic	Painswick Centre	7.00 for 7.45pm
Sat	10	Painswick Music Society - Jess Gillam (Sax), Sam Becker(Double bass), Zeynep Ozsuca (Piano). tickets@painswickmusicsoc.co.uk	St Mary's Church	3.00pm
Sun	11	Christian Aid Garden Shop (11 - 4.00pm) Ploughmans lunches (12 - 2.00pm) Cream teas (12 - 4.00pm)	Church Rooms	11.00 - 4.00pm
	11	Holy Communion (BCP)	St Mary's Church	9.30am
	11	Family Worship	St Mary's Church	11.00am
Mon	12	Library Book Club	Library	1.30 - 2.30pm
Tues	13	Morning Prayer	St Mary's Church	9.00am
	13	Short talk by Fr Anthony Paulsamy 'Reaching the Unreached'. Refreshments and sale of handwoven items made by village women in S. India	Catholic Church	11.00am
Wed	14	Gardening Club: Euphorbias - Tim Walker	Town Hall	7.00 for 7.30pm
Thurs	15	Painswick Probus: Musical satire in the 20th century - Peter Gill	Painswick Centre	11.00 for 11.30am
Fri	16	Exedra Nursery: Container Planting. 45.00 per person	Rococo Garden	
	16	Friday Club: Gargolies and Grotesques - John Putley. Enq 810878	Town Hall	2.30pm
	16	Christian Aid Salmon Supper - tickets £25/pp. Advance booking required - call 01452 810935.	Church Rooms	7.00 for 7.30pm
Sat	17	Covent Garden Voices: An evening of operatic delights in aid of Longfield. Tickets from coventgardenvoices.eventbrite.co.uk	St Mary's Church	7.00pm
Sun	18	Holy Communion	St Mary's Church	11.00am
Tues	20	Cotteswold Naturalists: Lost the plot - history of allotments - Fiona Warin. Enq 07767014957	Box Village hall	2.30pm
	20	Morning Prayer	St Mary's Church	9.00am
	20	PLHS - Annual Outing to Hilles House (limited numbers please check 813387)	Hilles House	7.00pm
Sat	24	Bee Trail until June 1st. Info@rococogarden.org.uk or 01452 813204	Rococo Garden	10.00 - 5.00pm
Sun	25	Deadline for all Beacon Copy		
	25	Beacon Praise	St Mary's Church	11.00am
Tues	27	Yew Trees WI: The life of Patricia Compton - Josephine Murray	Church Rooms	7.00 for 7.30pm
	27	Morning Prayer	St Mary's Church	9.00am
Weds	28	Downton House NGS Open Garden - entrance in Hollyhock Lane, Painswick.	Downton House	10.30 - 3.30pm
Thurs	29	Downton House NGS Open Garden - entrance in Hollyhock Lane, Painswick.	Downton House	10.30 - 3.30pm
	29	Ascension Day - Holy Communion	St Mary's Church	12.00pm
	30	Friday Club: Thames Boat Cruise (minibus to Lechlade). Pre-book 810 878.	Stamages Car Park	

June

Weds	4	Cotteswold Naturalists: Tour of Woodchester Mansion. Enq 01453 873439	Buckholt car park, Nympsfield	9.30am
	4	Yew Trees WI: Canal boat trip from Saul Junction. Prior booking essential	Saul Junction	11.00 - 2.30pm
Thurs	5	Painswick Probus: " You can see the doctor now " - Harvey Sagar	Painswick Centre	11.00 for 11.30am
Sat	7	Painswick Beacon published		

Personal column

Thank you

SYLVIA STEER and her family would like to thank everyone who attended Lynn's funeral and for all the cards they have received full of memories and warm wishes.

Condolences

To the family and friends of KATE MEAD who died peacefully on April 4th after a short illness. A service celebrating her life was held on April 25th.

To the family and friends of ANNE JAMES, who had lived in Gloucester Road for 50 years and died on April 3rd. She was a kind friend and her creativity was an inspiration to everyone. Anne was an excellent potter being a long-term member of the Gloucestershire Guild of Craftsmen. There was a memorial in celebration of her life on April 30th in the Painswick Centre.

To the family and friends of GILLY YOUNG (PADBURY) who has died recently. Gilly was a regular Church attendee, bell ringer and a member of the WI and the Field Club. She moved from Edge Road to Lincolnshire to be near to her family in 2021. There will be a service of Thanksgiving on Friday May 9th at St Botolph's Church, Saxilby, Lincolnshire. All are welcome. Details from Kate Brown at mrsebrown@gmail.com

A thanksgiving service was held on 11th April in St Mary's Church Appledore, Devon for the life of FIONA FLETCHER who died on 10th March. Many older Painswick residents will fondly recall Fiona, who lived in Gloucester Street for many years and played important roles in looking after the children at Gyde Home and also in the life of the former URC/Baptist chapel Christ Church, where she was church secretary. She moved to Appledore in the early 2000s but stayed in touch with several former colleagues, including her great friend Janet Thorne, who gave a moving tribute to Fiona in the Thanksgiving Service.

You could help Vicky Aspinall, if you would send information about those you know for whom a mention in the Personal Column would be appreciated cvasp.26@gmail.com

Landcare Services

Tree Surgery

All types of tree work undertaken
Contact Clare or Zeb
By Phone – 01452 812709
07969 918121
Or email at -
Clareoverhill@yahoo.com



MINI-ADS

Wanted to Buy: Old Bottles, flagons, pots etc.... especially anything marked Painswick. Good prices paid by Painswick collector. Please contact Miles - 07766 460127.

Help in the House. Do you need help with your housework, your ironing, doing your shopping? If so give Jo a call on 07777 177071.

Free to good home: Tunturi Front Drive Cross Trainer C65. Details on Internet. White Hospital Bed – no mattress. Black king size bed frame - slatted base – no mattress. Cable for electric fence. Call 07891 978889. Items to be collected.

Mini-Ads

Primarily for Painswick residents. Text maximum 30 words. Flat charge £6. Free to subscribers for private sales. £6 for business use, holiday rentals. etc.

Provide text, your name, address and contact details with payment in advance. Deadline as for all copy. More info call Peter Rowe, or mail: advertising.beacon@painswick.net

Disclaimer

The Beacon does its best to verify information published, but does not take any responsibility for the accuracy or reliability of information provided by other contributors. Paid advertising is accepted in good faith and we disclaim all liability for goods and services on offer.

Additional copies of the Beacon

are available from the Premier shop or online, where the Beacon can be seen in full colour at
www.painswickbeacon.org.uk

Turnstone Acupuncture & Chinese Herbal Medicine Practice

Simon Robey MBAcC, MRCHM
Acupuncture - Chinese Herbal Medicine
- Massage - Mindfulness Meditation
Greenhouse Lane Painswick GL6 6SE
07799 742498
turnstone2021@gmail.com
painswickacupuncture.com

NEXT ISSUE

Publication date
SATURDAY
June 7th 2025

Deadline for all copy
Sunday 25th May

www.painswickbeacon.org.uk
for current issue and archive, the annual directory and village maps.

for editorial attention only use
beacon@painswick.net
or hard copy - preferably typed
Beacon post box - New Street

All copy must include author, address and contact telephone number.
Photographs and advertising art work original at 600dpi in JPEG

The Beacon Team

Co-ordinating Editor this month

Peter Jackson 07985 002325
beacon@painswick.net

Editing Associates

John Barrus 812942
beacon@painswick.net

Alastair Jollans 814263
beacon@painswick.net

Next Month's Editor

Alastair Jollans 814263
beacon@painswick.net

Diary and Personal Column

Vicky Aspinall 07557 524016
cvasp.26@gmail.com

Feature writer and Directory

Carol Maxwell 813387
features.beacon@painswick.net
directory.beacon@painswick.net

Sport

John Barrus 812942
barrusjp@yahoo.co.uk

Distribution

Sue Delaney 07506 751761
distribution.beacon@painswick.net

Treasurer

Richard Aspinall 07884 214146
treasurer.beacon@painswick.net

Advertising

Peter Rowe 813228
advertising.beacon@painswick.net

Subscriptions

Jacek Wolowiec 813295
subscriptions.beacon@painswick.net



A selection of spring blossom

